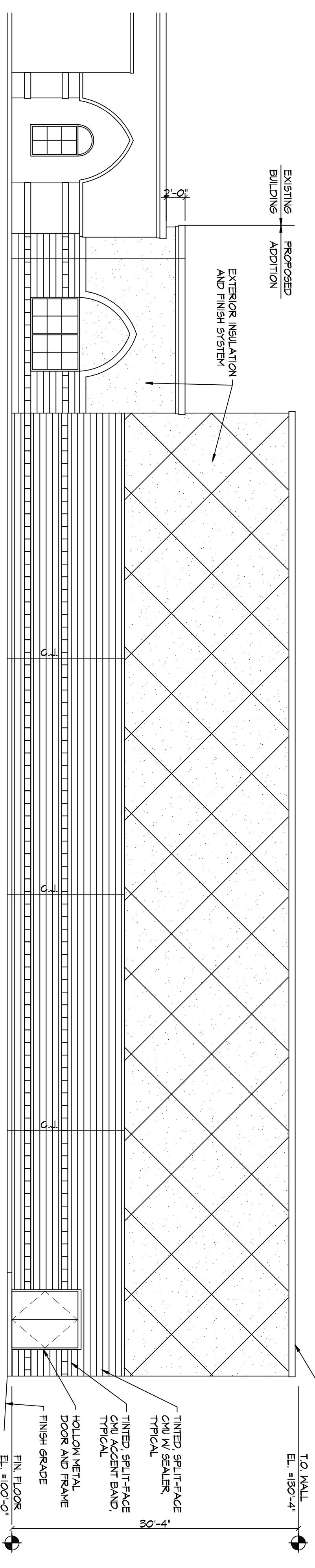
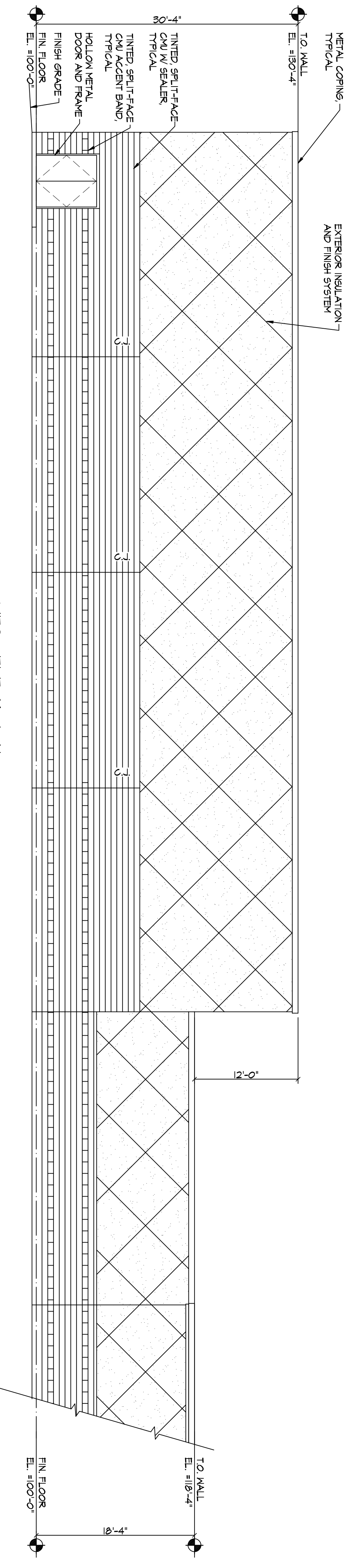


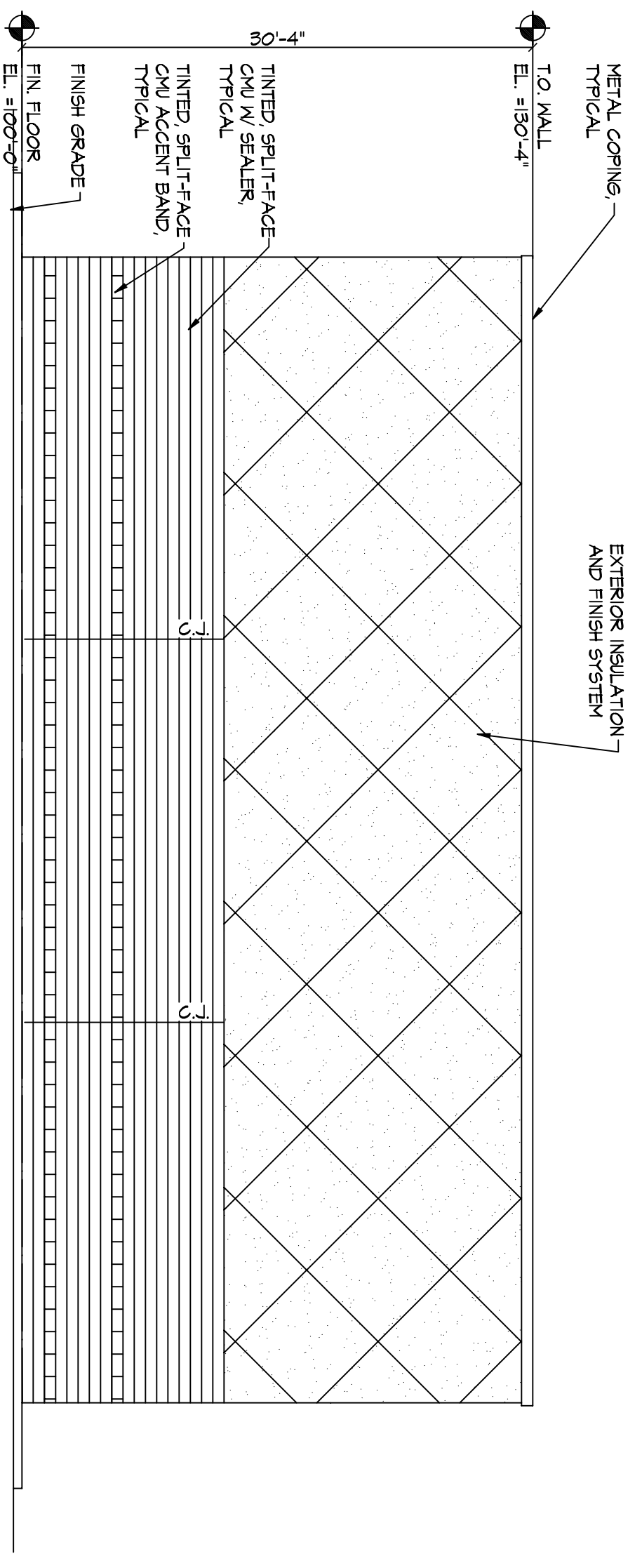
PARTIAL EAST ELEVATION AT ENTRY
1/8"=1'-0"



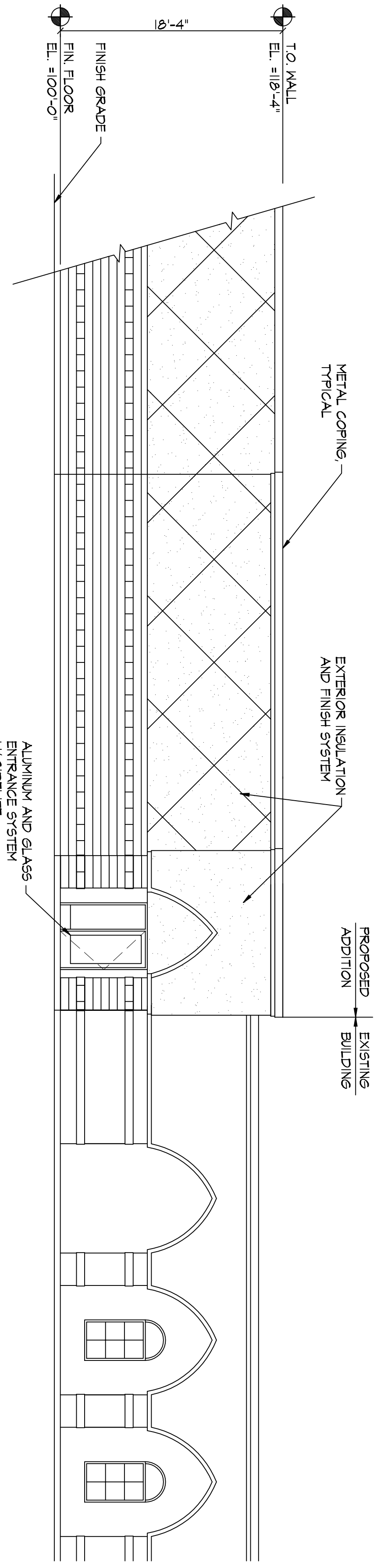
EAST ELEVATION
1/8"=1'-0"



WEST ELEVATION
1/8"=1'-0"



NORTH ELEVATION
1/8"=1'-0"



PARTIAL WEST ELEVATION AT ENTRY
1/8"=1'-0"

REVISIONS		
JOB NO.	04-023	
DATE	APRIL 1, 2010	
DRAWN BY	JKC	
SCALE	1/8"=1'-0"	
SHEET NO.		

EXTERIOR ELEVATIONS

PROPOSED NEW ADDITION FOR THE
GRAND BLANC ISLAMIC CENTER
1479 E. BALDWIN ROAD, GRAND BLANC, MI 48439

JOHN K. COSTA, AIA
ARCHITECTURAL DESIGN & CONSULTATION, PLLC
417 OLD MILL DRIVE
FLUSHING, MICHIGAN 48433 810-659-5275 FAX 810-659-5399